

Name:

Student Code:



34th International Chemistry Olympiad
Groningen, Wednesday, 10 July 2002
Theoretical Examination

Chemistry and the Quality of Life go Hand in Hand

Theme I Chemistry of Life

- I-1 Oxygen in Your Life
- I-2 Nitrogen Cycle in Nature

Theme II Chemistry of Industrial Relevance

- II-1 Inulin, a New Renewable Raw Material
- II-2 Production of Methanol
- II-3 Aramids, High-Performance Polymeric Materials

Theme III Chemistry of Functional Molecules in Nature

- III-1 Phospholipids in Membranes
- III-2 Glutathione, an Essential Mini-Peptide

Theme IV Chemistry Related to Light and Energy

- IV-1 Lighting Lamps
- IV-2 Red Ruby
- IV-3 Vehicle Traction Batteries

Name:

Student Code:

- Write your name and student code (posted at your station) on all the pages of the theoretical examination.
- You have 5 hours to complete all the tasks and record your results in the answer boxes, you must stop your work immediately after the STOP command is given. A delay in doing this by 3 minutes will lead to cancellation of the current task and will result in zero points for the task.
- All results must be written in the appropriate boxes on the pages. Anything written elsewhere will not be marked. Do not write anything on the back of your answer sheets. If you need additional sheets or a replacement sheet, request it from the supervisor.
- For a sanitary stop: ask your supervisor for permission.
- When you have finished the examination, you must put all of your papers into the envelope provided, then you must seal the envelope. Only papers in the sealed envelope will be marked.
- A receipt will be issued for your sealed envelope. Do not leave the examination room until you are directed to do so.
- Use only the pen and calculator provided.
- A copy of the Periodic Table of the Elements is provided.
- This examination paper has 31 pages of problems including answer boxes.
- An official English-language version is available only on request.

Theme 1 - Chemistry of Life

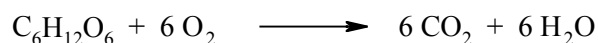
Life runs on chemistry. Understanding and monitoring life processes receive much attention in chemistry.

Problem I-1 Oxygen in Your Life

Score: 6 points

	1	2	3	4	5
Marks	25	25	15	25	10

Oxygen is of vital importance for all of us. Oxygen enters the body via the lungs and is transported to the tissues in our body by blood. There it can deliver energy by the oxidation of sugars:



This reaction releases 400 kJ of energy per mol of oxygen. O_2 uptake by blood is at four heme (Hm) groups in the protein hemoglobin (Hb).

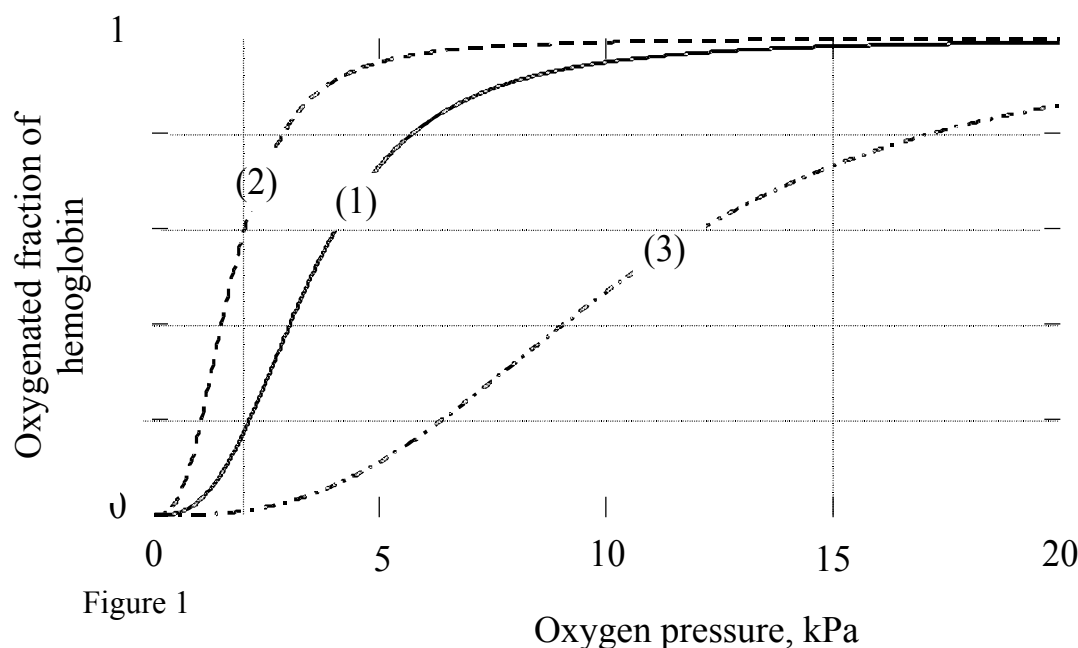
Free Hm consists of an Fe^{2+} ion attached to four N atoms of a porphyrin²⁻ ligand. Oxygen can bind at the coordination site of Fe^{2+} giving a $\text{Hm}\cdot\text{O}_2$ complex. Carbon monoxide can be complexed similarly, giving a $\text{Hm}\cdot\text{CO}$ complex. CO is a poison as it binds more strongly to Hm than O_2 does. The equilibrium constant K_1 for the reaction:



is 10000 times larger than the equilibrium constant K_2 for the reaction:



Each Hb molecule can take up four molecules of O_2 . Blood in contact with O_2 absorbs a fraction of this amount, depending on the oxygen pressure, as shown in Figure 1 (curve 1). Also shown are the curves (2) and (3) for blood with two kinds of deficient Hb. These occur in patients with certain hereditary diseases.



Name:

Student Code:

Relevant data: O_2 pressure in lungs is 15 kPa; in the muscles it is 2 kPa. The maximum flow of blood through heart and lungs is $4 \times 10^{-4} \text{ m}^3 \text{ s}^{-1}$. The red cells in blood occupy 40% of the blood volume; inside the cells the concentration of Hb is 340 kg m^{-3} ; Hb has a molar mass of 64 kg mol^{-1} . $R = 8.314 \text{ J mol}^{-1} \text{ K}^{-1}$. $T = 298 \text{ K}$.

I-1-1 Using the relation between K and the standard Gibbs energy ΔG^0 for a reaction, calculate the difference between the ΔG^0 values for the heme reactions (1) and (2).

Answer:

Calculation:

I-1-2 Estimate from Figure 1 (to 2 significant figures) how many moles of O_2 are deposited in muscle tissue when one mole of Hb travels from the lungs to the muscles and back again for the three different types of Hb.

Hb type 1:

Hb type 2:

Hb type 3:

I-1-3 The special S-shaped uptake curve 1 is the result of subtle structural features of Hb. The deficient Hb shown in curve 2 is not optimal because:

- The binding with O_2 is too weak.
- The binding with O_2 is too strong.
- The maximum oxygen capacity is too low.
- The deficiency is caused by carbon monoxide poisoning.

Name:

Student Code:

I-1-4 Calculate how much oxygen (in mol s⁻¹) can be deposited in tissue by blood with normal Hb (1).

Answer:

Calculation:

I-1-5 Calculate the maximum power that the body can produce (assuming it is limited by oxygen transfer).

Answer:

Calculation:

Name:

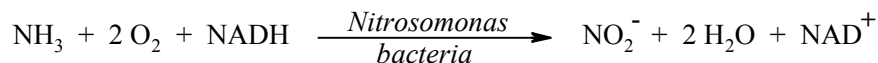
Student Code:

Problem I-2 Nitrogen Cycle in Nature

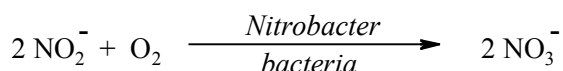
Score: 7 points

	1	2	3	4	5
Marks	15	15	20	25	25

Ammonia is a toxic substance to marine animals at levels exceeding 1 ppm. Nitrifying bacteria play an important role in the conversion of NH_3 first to nitrite and then to nitrate, the storage form of nitrogen in the soil.



NADH is the biochemical reducing agent of the coenzyme nicotinamide dinucleotide (NAD), NAD^+ is the oxidized form of the coenzyme NAD.



I-2-1 Give the oxidation states of N in the following series: (Use the boxes below the compounds)



The spectrophotometric analysis of nitrite is based on a reaction with an indicator. The coloured product then obtained has an absorbance maximum at $\lambda = 543 \text{ nm}$.

For quantitative analyses a calibration curve has to be made, in which absorbance at the maximum absorbance wavelength $\lambda = 543 \text{ nm}$ is plotted against nitrite concentration in a series of standards.

I-2-2 The measurements are performed at the wavelength with the maximal absorbance because:

- There is no interference of impurities
- There is no contribution of stray light
- There is optimal accuracy of the measurement
- None of these statements

Mark the correct answer.

Name:

Student Code:

The absorption is measured with a single beam spectrophotometer. However 5% of the light, the so-called stray light I_s , strikes the detector directly (see Figure 2).

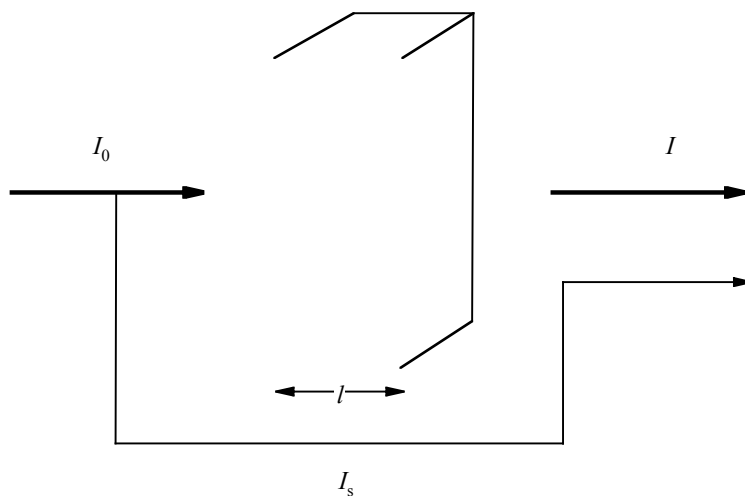


Figure 2

I-2-3 Calculate the value of the absorbance A shown by the spectrophotometer if $\epsilon = 6000 \text{ M}^{-1} \text{ cm}^{-1}$, $l = 1 \text{ cm}$ and $c = 1 \cdot 10^{-4} \text{ M}$

Answer:

Calculation:

For a nitrite determination in water the following data have been measured.

concentration of nitrite nitrogen (ppm)	absorbance at 543 nm (1.000 cm cuvet)
blank	0.003 (due to impurities in the solvent)
0.915	0.167
1.830	0.328

Name:

Student Code:

I-2-4 Determine from the data given above, using the values corrected for the solvent impurities, the slope m and the intercept b of the calibration curve $A = m c + b$.

Answer:

Calculation of m :

Calculation of b :

The duplicate analyses of a water sample are given below. The measurements have been performed at a wavelength of 543 nm and in a 2.000 cm cuvet.

water sample	absorbance
analysis 1	0.562
analysis 2	0.554

For the calculation of the concentration of the nitrite nitrogen (c in ppm) the equation obtained by the method of least squares

$$\text{corrected absorbance} = 0.1769 c + 0.0015$$

may be applied, using the measurements in a 1.000 cm cuvet.

I-2-5 Calculate the average nitrite nitrogen concentration in ppm and $\mu\text{g mL}^{-1}$. Hint: Take the blank from problem I-2-4.

Answer:

Calculation:

Name:

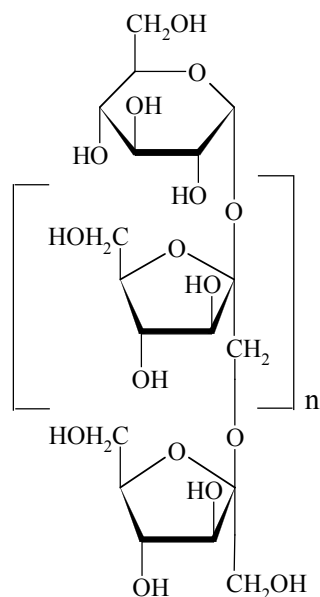
Student Code:

Theme II - Chemistry of Industrial Relevance

In our daily life we use many products that are produced on an industrial scale. Mastering the underlying chemistry is at the heart of this business.

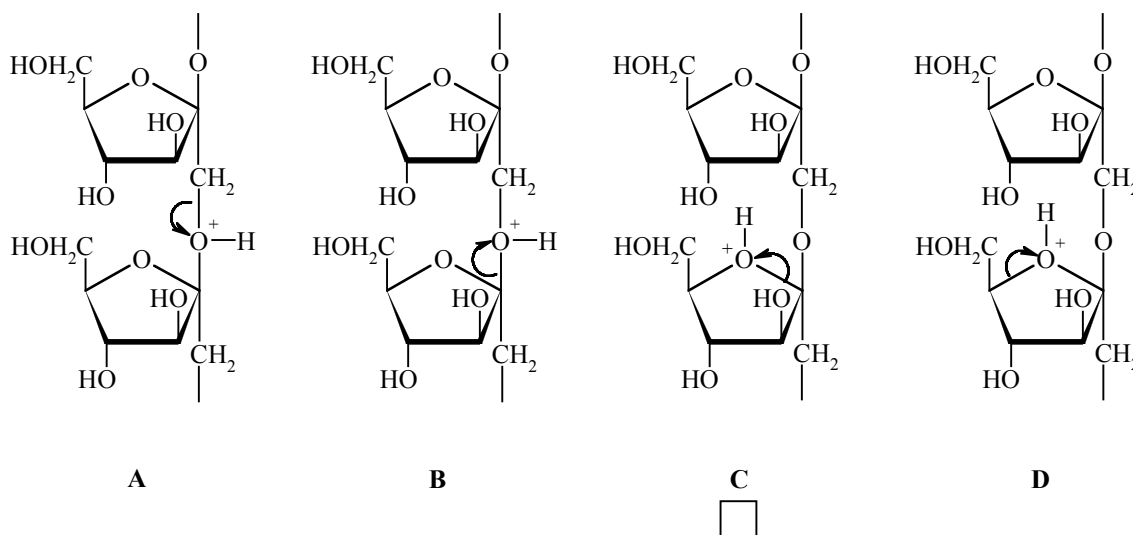
Problem II-1 Inulin, a New Renewable Raw Material Score: 6 points

	1	2	3	4	5
Marks	15	15	30	10	30



Inulin, which is produced from chicory roots in Belgium and The Netherlands, is used as a food additive as it has a beneficial effect on the intestinal flora. It is also used as source of fructose which is 1.9 times sweeter than sucrose, and for the production of mannitol which is used in chewing gum. Inulin is a linear polymer of fructose units with a glucose unit at one end; its Haworth projection formula is shown at the left. In this problem inulin has 10 fructose units ($n = 9$).

II-1-1 Inulin may be hydrolyzed under H^+ -catalysis conditions. Of the four options below (A, B, C and D) indicate which C-O bond cleavage is most likely to occur.



Mark the correct cleavage mechanism for the most efficient hydrolysis.

Name:

Student Code:

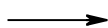
Hydrolysis with isotopically labelled water can provide information about the mechanism of hydrolysis using modern NMR techniques, which can “see” deuterium (^2H) and the oxygen isotope ^{17}O .

II-1-2 Indicate which labelled water can **best** be used for this purpose. Mark the correct answer.

- $^2\text{H}_2\text{O}$
- H_2^{17}O
- $^2\text{H}_2^{17}\text{O}$
- None of them.

Upon catalytic hydrogenation glucose gives sorbitol (**S**), whilst fructose (**F**) gives mannitol (**M**) and sorbitol (**S**).

II-1-3 Draw the Fischer projections of fructose (**F**), sorbitol (**S**) and mannitol (**M**).



+

F

S

M

1.00 Mole of inulin in 2.00 kg of water with added catalysts, is subjected to hydrolysis and hydrogenation at 95 °C in a one step process. The selectivity of the hydrogenation of fructose to mannitol / sorbitol is 7 / 3.

II-1-4 How many moles of mannitol and sorbitol are obtained?

M:

S:

Name:

Student Code:

After completion of the reactions the catalysts are removed and the reaction mixture is cooled to 25 °C. The solubility of **M** is 0.40 mol kg⁻¹ in water at 25 °C and the solubility of **S** is so high that it will not precipitate.

II-1-5 Calculate how many moles of **M** will precipitate.

Answer:

Calculation:

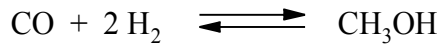
Name:

Student Code:

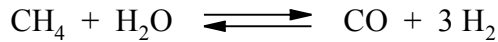
Problem II-2 Production of Methanol Score: 6 points

	1	2	3	4	5
Marks	15	20	15	25	25

Methanol (CH_3OH) is a chemical that is used for the production of additives in gasoline and many common plastics. A factory, producing methanol, is based on the reaction:



Hydrogen and CO are obtained by the reaction:



The three units of the factory, namely, the “reformer” for the hydrogen / carbon monoxide production, the “methanol reactor” and a “separator” to separate methanol from CO and H_2 , are schematically shown in Figure 1. Four positions are indicated by α , β , γ and δ .

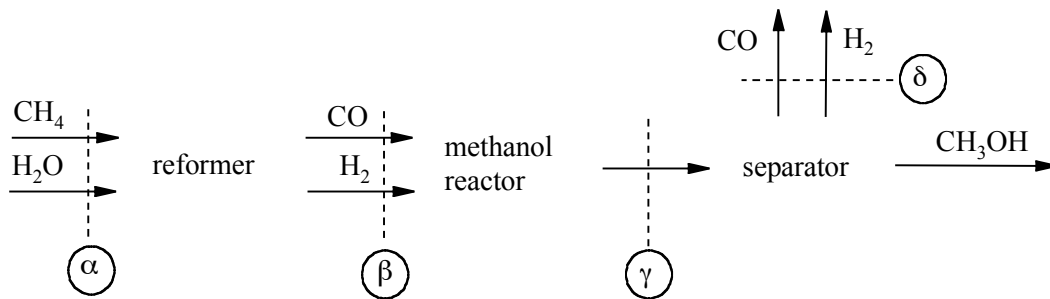


Figure 1

The flow of methanol at position γ is $n[\text{CH}_3\text{OH}, \gamma] = 1000 \text{ mol s}^{-1}$. The factory is so designed that $2/3$ of the CO is converted to methanol. Excess CO and H_2 at position δ are used to heat the first reactor. Assume that the reformer reaction goes to completion.

II-2-1 Calculate the flow of CO and H_2 at position β .

II-2-2 Calculate the flow of CO and H_2 at position γ .

II-2-3 Calculate the flows of CH_4 and H_2O needed at position α .

Name:

Student Code:

II-2-4 At point γ all species are gases. Calculate the partial pressures in MPa for CO, H₂ and CH₃OH at position γ using the equation:

$$p_i = p \frac{n_i}{n_{\text{tot}}}$$

wherein n_i is the flow and p_i the partial pressure of the compound i , n_{tot} is the total flow at the position considered, and p the total pressure in the system. ($p = 10$ MPa)

Answer $p[\text{CO}, \gamma]$:

Answer $p[\text{H}_2, \gamma]$:

Calculations:

When the methanol reactor is large enough the reaction goes to equilibrium. The partial pressures at point γ obey the equation:

$$K_p = \frac{p_{\text{CH}_3\text{OH}} p_0^2}{p_{\text{CO}} p_{\text{H}_2}^2}$$

wherein p_0 is a constant (0.1 MPa) and K_p is a function of temperature as is shown in Figure 2 (the vertical scale is logarithmic).

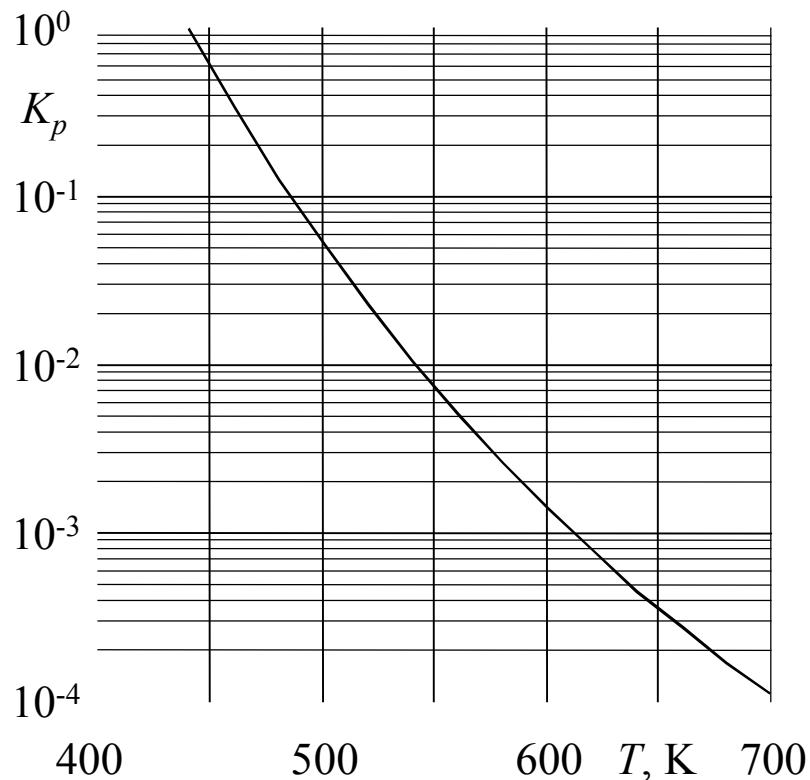


Figure 2

Name:

Student Code:

II-2-5 Calculate K_p and indicate at which temperature T the reaction must be operated to achieve this equilibrium.

Answer K_p :

Answer T :

Calculation:

Name:

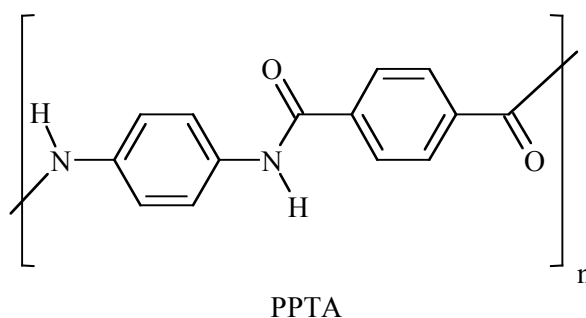
Student Code:

Problem II-3 Aramids, High-Performance Polymeric Materials

Score: 6 points

	1	2	3	4
Marks	20	30	25	25

Aromatic polyamides (aramids) are high strength, high performance polymer fibers that find use in composite materials, bullet-proof vests, high quality skis, safety helmets, etc. Aramid PPTA is marketed under the names Kevlar® (DuPont) and Twaron® (Teijin), and amongst others manufactured in the north of The Netherlands. The PPTA chains are neatly packed into fibers with a sheet type structure.



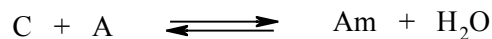
II-3-1 Draw the structure of these sheets (three chains suffice).

Name:

Student Code:

For a polymerisation of equimolar amounts of two monomers the average chain length is \bar{P}_n , the degree of conversion is p , which equals the fraction of functional groups that have reacted, the total number of chains is N_t and the total initial number of monomers is U_0 .

Assuming that the polymerization equilibrium can fully be described by:



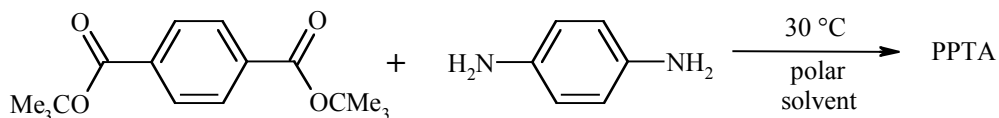
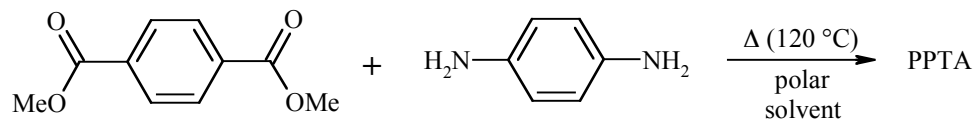
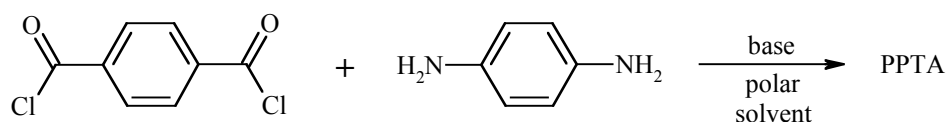
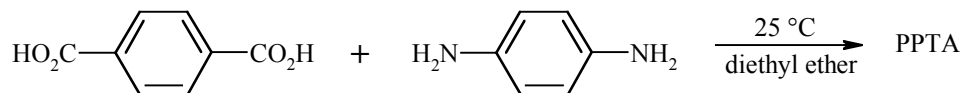
Where C stands for any $-\text{CO}_2$ group, A stands for any $-\text{NH}_2$ group and Am stands for any amide group.

II-3-2 Calculate the degree of conversion needed to obtain an average chain length of 500.

Answer:

Calculation:

II-3-3 For the synthesis of PPTA the following possibilities are considered. Which of the following reactions will work? Mark the correct answer(s).



Name:

Student Code:

II-3-4 Another type of aramid can be produced from 4-aminobenzoic acid (4-aminobenzene-carboxylic acid) by heating.

(a) Give the structure of this aramid ($n = 4$)

(b) Calculate the average chain length at equilibrium (reaction is carried out in a closed vessel). The equilibrium constant $K = 576$.

Answer: $\bar{P}_n =$

Calculation:

Theme III - Chemistry of Functional Molecules in Nature

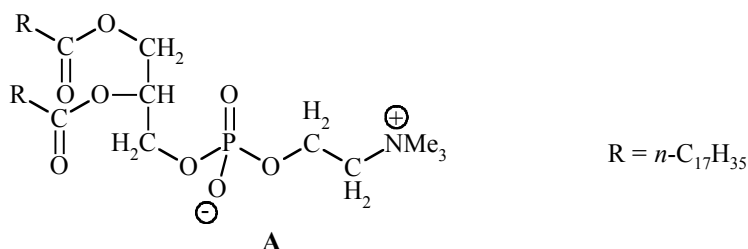
A challenge in chemistry is to discover what nature does and how the structures of biologically active molecules are related to what they do.

Problem III-1 Phospholipids in Membranes

Score: 6 points

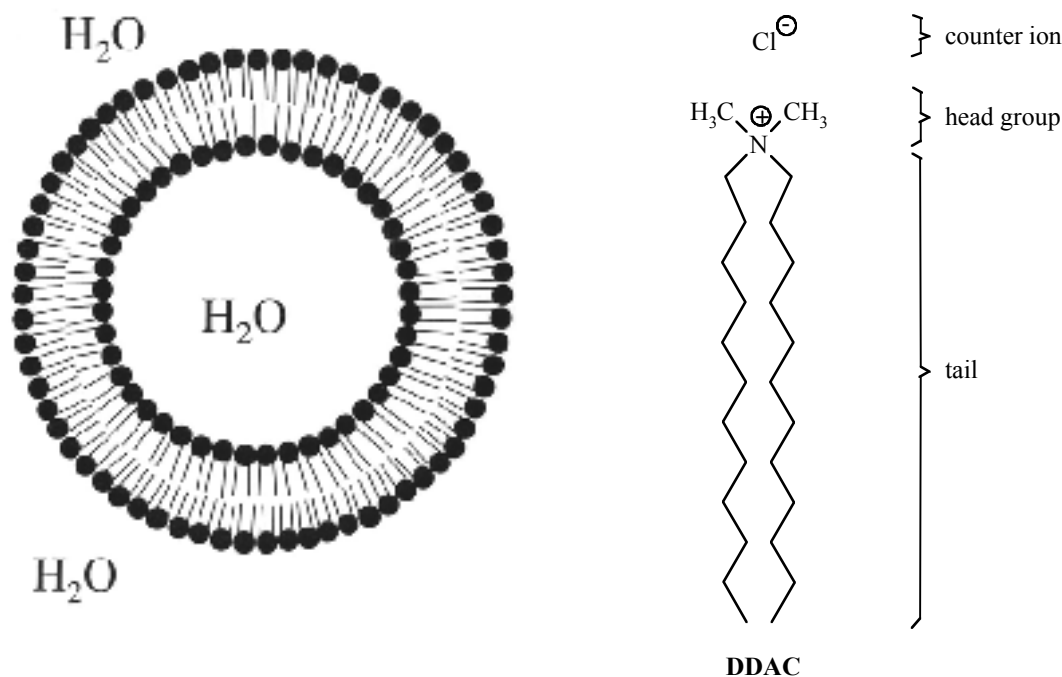
	1	2	3	4	5
Marks	20	20	20	20	20

Biological cell membranes are complex, functional, non-covalent molecular assemblies, largely consisting of lipids and proteins. Their function is of vital importance for life processes. They separate the cell from its environment and also determine the specific flow of information between the cell contents and the environment. Phospholipids are among the most important components of cell membranes. An example is compound A.



Upon dispersion in water (above a low critical concentration) compound A forms closed bilayer structures, called liposomes, which are employed as model compounds for aspects of the chemistry of the structurally much more complex cell membranes. Liposomes are globular aggregates with the polar or ionic head groups in contact with water and with the alkyl tails sequestered in a hydrophobic core. The bilayer structure encloses an aqueous inner compartment.

Double-tailed *synthetic* surfactants also form closed bilayer assemblies similar to liposomes but now called vesicles. An example is di-*n*-dodecyldimethylammonium chloride (DDAC).

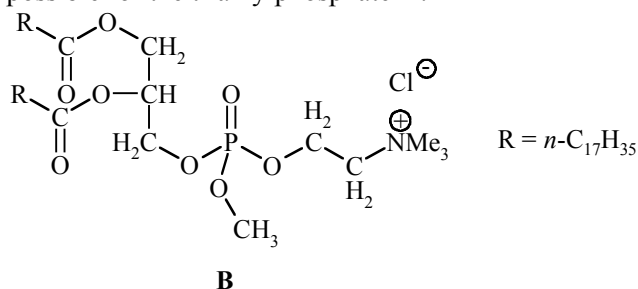


Name:

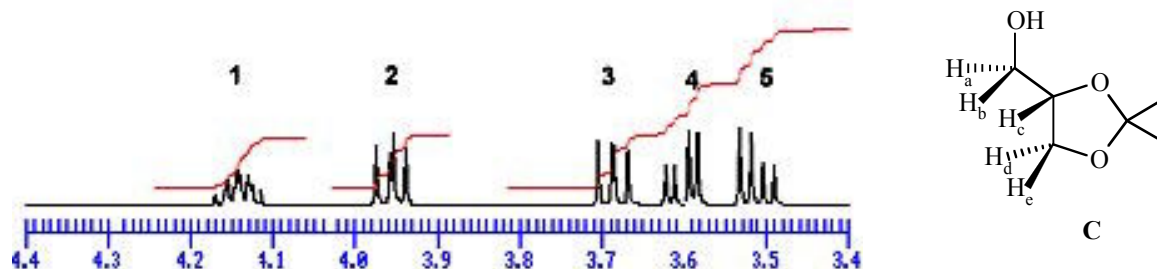
Student Code:

III-1-1 (a) How many stereoisomers are possible for compound A?

(b) How many stereoisomers are possible for the trialkylphosphate B?



A precursor for the synthesis of compound A is the acetonide C derived from glycerol. Part of the ^1H -NMR spectrum of compound C is shown below.

III-1-2 Which signal number in the ^1H -NMR spectrum corresponds to proton H_c ?

The bilayer of a liposome can be characterized by V (the volume of the hydrocarbon chains), a_0 (optimal cross-sectional surface area of the head groups of the phospholipid in the aggregate) and l_c (the maximum chain length that the alkyl group can assume). A good approximation for unbranched alkyl tails containing n carbon atoms yields:

$$V = (27.4 + 26.99 n) \times 10^{-3} \text{ nm}^3$$

$$l_c = (0.154 + 0.1265 n) \text{ nm}$$

For very large n values, the intertail interactions dominate over the head group repulsions.

Name:

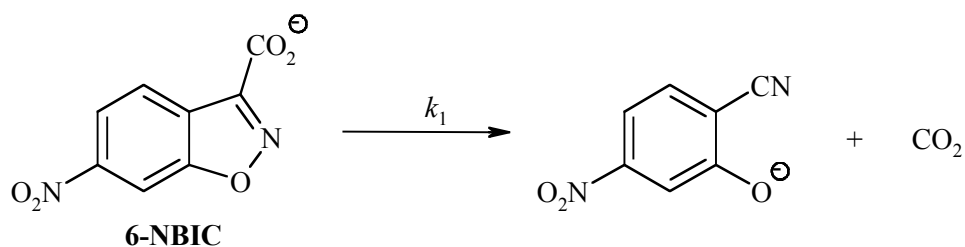
Student Code:

III-1-3 Calculate the minimum cross-sectional surface area of the head groups for such very large n values.

Answer:

Calculation:

Vesicles formed from **DDAC** (above its critical vesicle concentration, c_{vc}) catalyse the unimolecular decarboxylation of 6-nitro-benzisoxazole-3-carboxylate (**6-NBIC**).

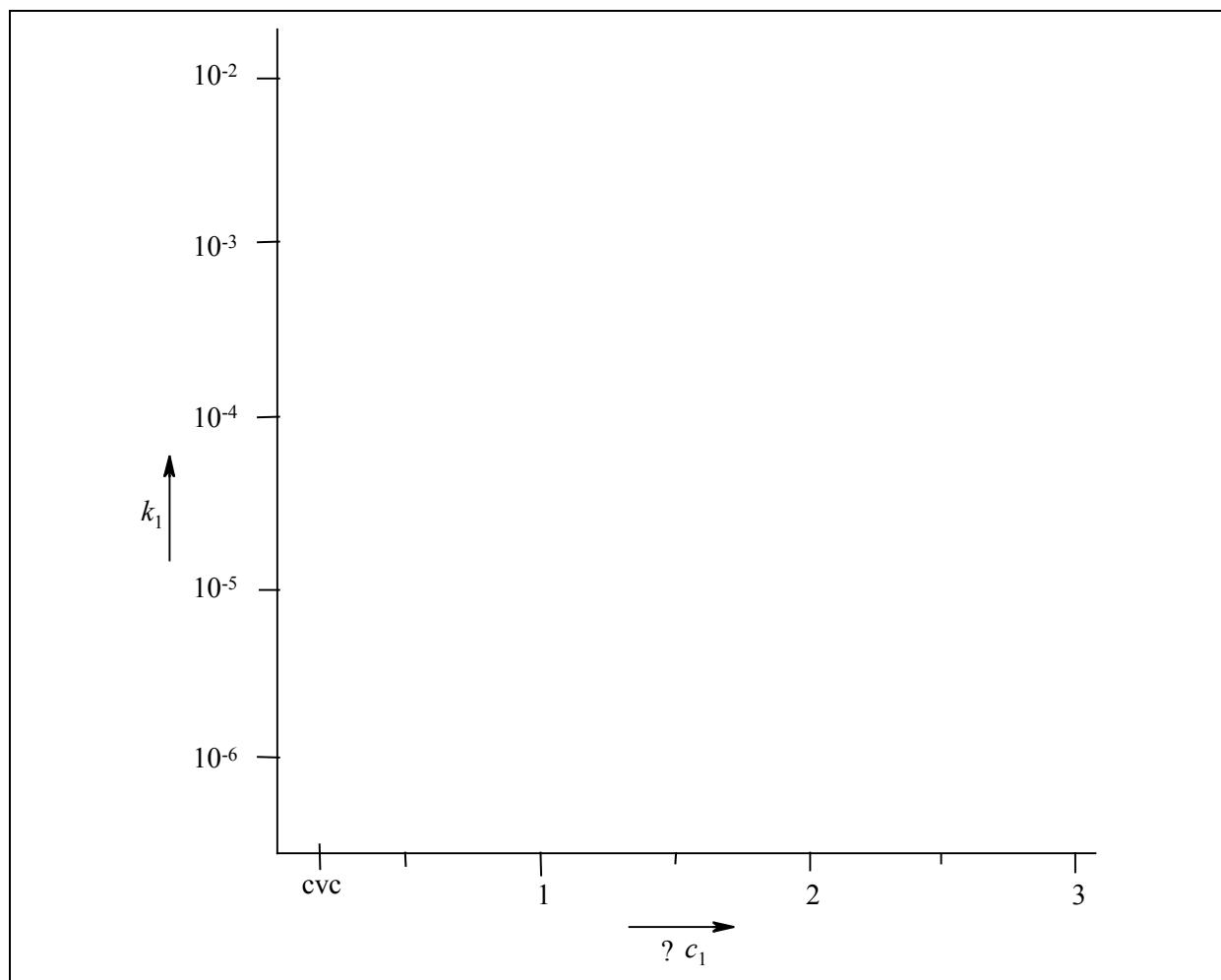


In water at 25 °C $k_1 = 3.1 \times 10^{-6} \text{ s}^{-1}$. At the concentration c_1 of **DDAC** at which **6-NBIC** becomes fully bound to the vesicles, $k_1 = 2.1 \times 10^{-3} \text{ s}^{-1}$.

Name:

Student Code:

III-1-4 Sketch a plot of k_1 vs. $[\text{DDAC}]$ for $[\text{DDAC}] = 0 \rightarrow 3 c_1$.



III-1-5 The main reason for the efficient catalysis of the decarboxylation of **6-NBIC** by **DDAC** vesicles is:

- The decarboxylation is catalysed by the Cl^- ions bound to the surface of the vesicles.
- Efficient loss of hydration of the carboxylate group of vesicle-bound 6-NBIC.
- Strong binding of CO_2 in the interior of the vesicle.
- Strong binding of the organic reaction product to the vesicles relative to that of 6-NBIC.

Mark the correct answer.

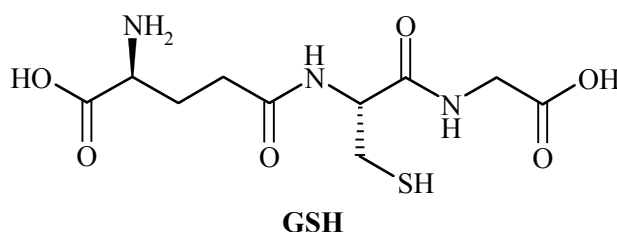
Name:

Student Code:

Problem III-2 Glutathione, an Essential Mini-Peptide **Score: 6 points**

	1a	1b	2a	2b	2c	3
Marks	10	24	18	8	25	15

Glutathione, abbreviated as GSH, is a small peptide that is present in almost all tissues of animals. GSH fulfils important biological functions, such as detoxification of electrophilic chemicals and reduction of (organic) peroxides in blood. An electrophilic compound reacts irreversibly with GSH, especially in the liver, to give a primary product that is converted by a series of biotransformations into a so-called *mercapturic acid*, which is excreted via the urine. Oxidants react with GSH to give the disulfide GSSG, which can be enzymatically reverted to GSH with reductases. The ratio GSH/GSSG in most cells is ≥ 500 .



III-2-1 (a) How many amino acid residues are present in GSH?

(b) Draw the structures of the corresponding amino acids and mark the chiral centers with an asterisk.

A mercapturic acid **A** isolated from urine of a person who has been exposed to acrylonitrile ($\text{H}_2\text{C}=\text{CH}-\text{CN}$) has the molecular formula $\text{C}_8\text{H}_{12}\text{N}_2\text{O}_3\text{S}$. The ^1H -NMR spectrum of **A** in $(\text{CD}_3)_2\text{SO}$ is shown in Figure 1. When the product is pretreated with D_2O , the signals at δ 12.8 and δ 6.8 are no longer present and the signal 3 is simplified.

Name:

Student Code:

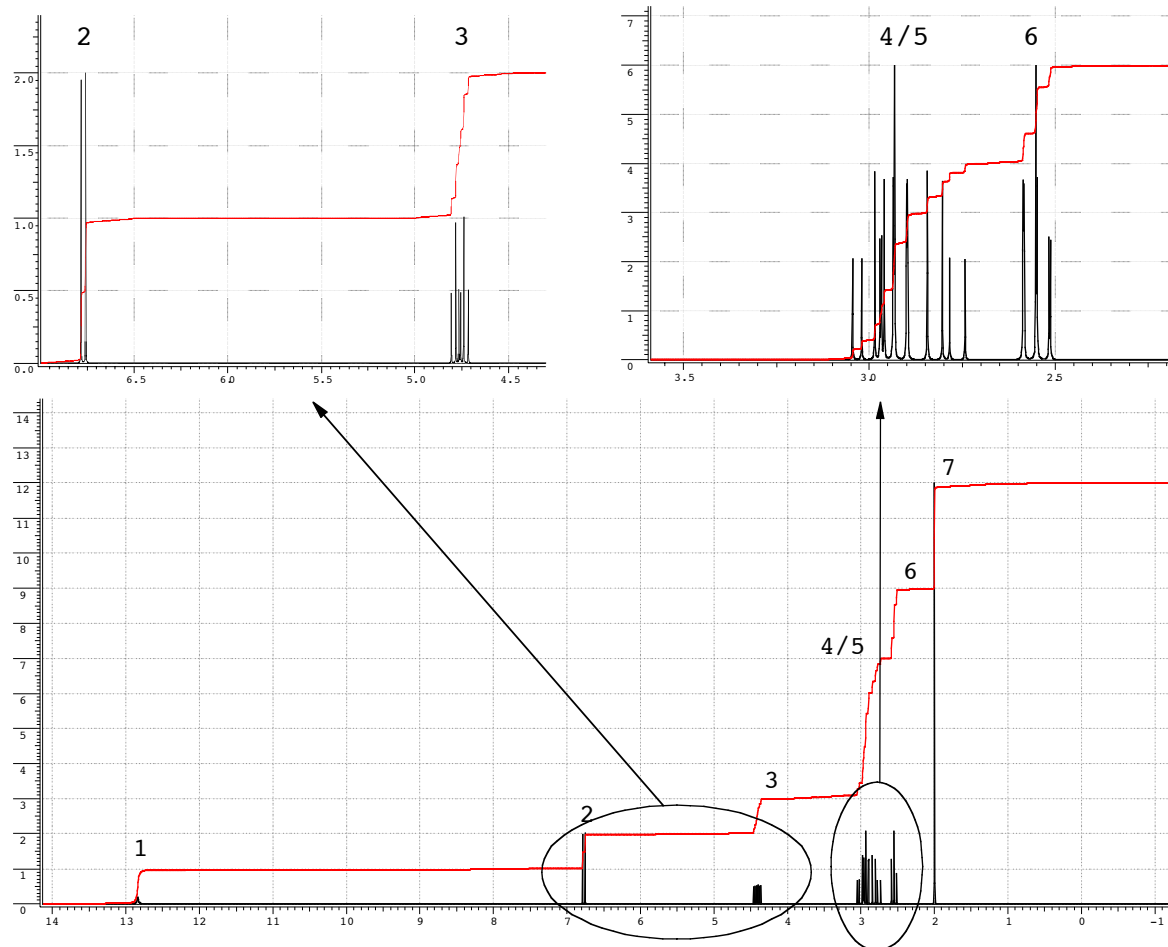


Figure 1

III-2-2 (a) The NMR-signals correspond with protons in the following groups: CH, CH₂, CH₃, OH and NH. Indicate the appropriate proton group in the boxes for the signals 1-7.

Signals 1 2 3 4/5 6 7

Protons

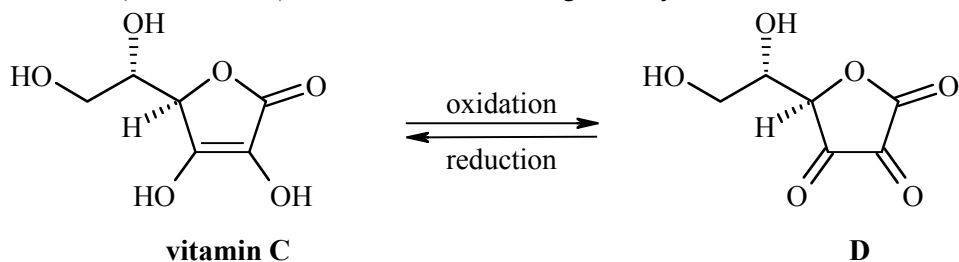
(b) How many carbon atoms are present in compound A that do not carry any protons?

(c) Draw the structure of compound A.

Name:

Student Code:

Vitamin C (ascorbic acid) reacts with oxidants to give dehydroascorbic acid **D**



III-2-3 Eating fresh fruit and vegetables is healthy

- because vitamin C forms a complex with GSH.
- because vitamin C reacts with electrophilic compounds.
- because vitamin C removes oxidants and prevents undesired depletion of GSH.
- for many reasons, but none of them has anything to do with GSH.

Name:

Student Code:

Theme IV - Chemistry Related to Light and Energy

Chemistry plays a major role in meeting our needs of light and energy. Our life is unthinkable without artificial light and energy for mobility.

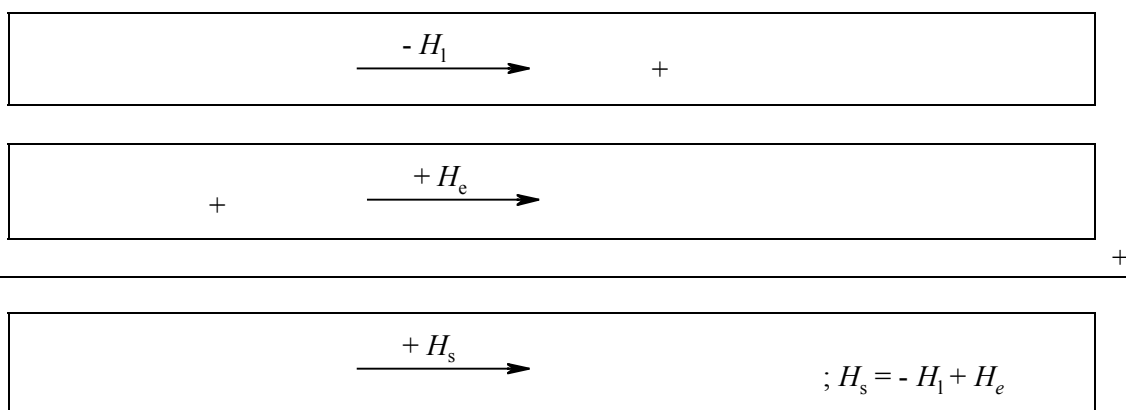
Problem IV-1 Lighting Lamps

Score: 7 points

	1	2	3	4	5
Marks	10	25	25	35	5

Since 1891 lighting lamps have been manufactured in The Netherlands. The improvement today in comparison to the first lamp is enormous, especially with the introduction of the gas discharge lamps. The life-time has increased by orders of magnitude. The colour is also an important aspect. Rare earth metal compounds like CeBr_3 are now included to reach a colour temperature of 6000 K in the lamp. These compounds are ionic solids at room temperature, and upon heating they sublime partially to give a vapour of neutral metal halide molecules. To achieve a high vapour pressure, the sublimation enthalpy should be as low as possible.

IV-1-1 Give a thermochemical cycle (Law of Hess) for sublimation of CeBr_3 , via a vapour of mononuclear ions. ($H_1 = H_{\text{lattice}}$; $H_e = H_{\text{electrostatic}}$; $H_s = H_{\text{sublimation}}$; H is not absolute, H means ΔH)



The lattice energy of the solid can be calculated using the Born-Landé formula:

$$H_1 = f \frac{Z_+ Z_- A e^2}{r_+ + r_-} \left(1 - \frac{1}{n}\right)$$

The factor $f e^2$ (necessary in order to calculate the lattice energy in kJ mol^{-1}) amounts to 139 when the ionic radii are substituted in nm. The Madelung constant A for the lattice is 2.985. The Born exponent n is 11. The charges of the ions Z_+ and Z_- are integer numbers (Z_- is negative). For the calculation of the energy of gaseous CeBr_3 (when formed from ions) the same Born-Landé formula can be used without A . The structure of CeBr_3 in the gas phase is planar triangular. The radius of Ce^{3+} is 0.115 nm and of Br^- is 0.182 nm.

Name:

Student Code:

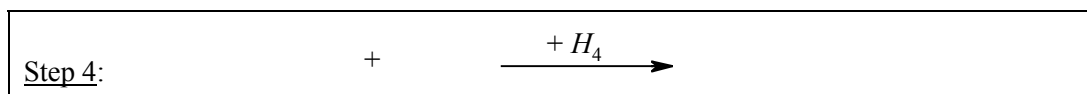
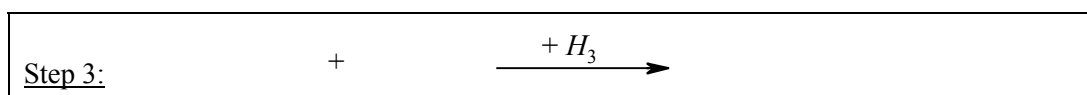
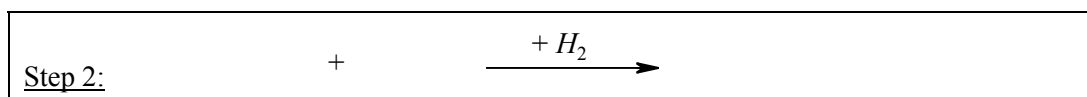
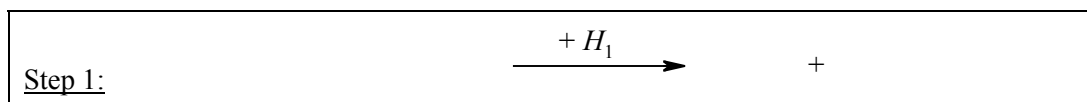
IV-1-2 Calculate the enthalpy of sublimation of CeBr_3 (in integers; be aware of the signs!)

Answer:

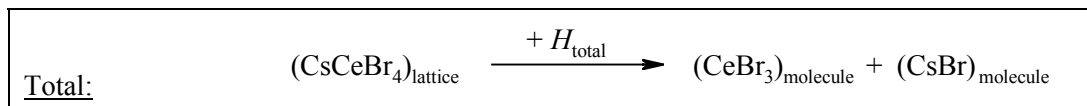
Calculation:

Attempts to make a better lamp have been undertaken by adding a stoichiometric amount of CsBr to the CeBr_3 in the lamp leading at room temperature to solid CsCeBr_4 . When the sublimation temperature decreases the life time of the lamp will increase likewise. The CsCeBr_4 lattice has a NaCl structure with Cs^+ as cations and tetrahedral CeBr_4^- as complex anions. Sublimation of CsCeBr_4 leads to a vapour of CsBr and CeBr_3 molecules.

IV-1-3 Give the reaction equations of the thermochemical cycle (Law of Hess) for this process in which some steps involve CeBr_4^- ions, mononuclear ions and/or neutral molecules in the gas phase.



+



Name:

Student Code:

IV-1-4 Calculate the enthalpy of sublimation of CsCeBr_4 (in integers). Use the Born–Landé formula for all steps in the process and report the separate energies also (be aware of the signs!). The Madelung constant for NaCl is 1.75. The Cs–Ce distance in the lattice is 0.617 nm. The CeBr_4^- anion is a tetrahedron in which the ratio between the edge and the distance between a corner of the tetrahedron and the centre of gravity (body-radius) amounts to $(2\sqrt{6})/3 = 1.633$. The Born exponent of CsBr is 11. The radius of Cs^+ is 0.181 nm.

Answer Step 1: $H_1 =$

Calculation:

Answer Step 2: $H_2 =$

Calculation:

Answer Step 3: $H_3 =$

Calculation:

Answer Step 4: $H_4 =$

Calculation:

Answer total sum: $H_{\text{total}} =$

Calculation:

Name:

Student Code:

IV-1-5 Conclusion in relation to the previous answers: Was adding CsBr a good idea? Mark the correct answer.

- Adding CsBr is counterproductive
- Adding CsBr has no influence
- Adding CsBr is advantageous
- From these data no clear answer can be given

Name:

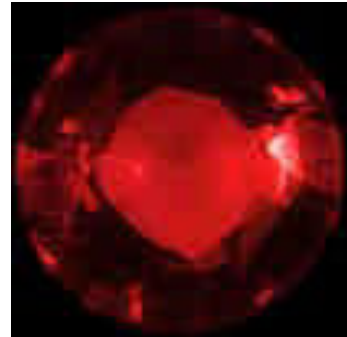
Student Code:

Problem IV-2 Red Ruby

Score: 5 points

	1	2	3	4	5
Marks	20	20	20	20	20

Ruby crystals have a deep red colour and are well known for their use in jewellery. Not many people know that the heart of the first laser, built in 1960 by Maiman, was a big ruby crystal. The red colour of ruby originates from the absorption of light by Cr^{3+} ions that are incorporated in colourless aluminium oxide (Al_2O_3) crystals. The Cr^{3+} ion has 3 electrons in the $3d$ shell and the absorption of light is due to electronic transitions between $3d$ orbitals of lower and higher energy.



N.B.: A colour picture of the ruby crystal is shown in the Appendix.

IV-2-1 Indicate which of the four absorption spectra belongs to ruby.

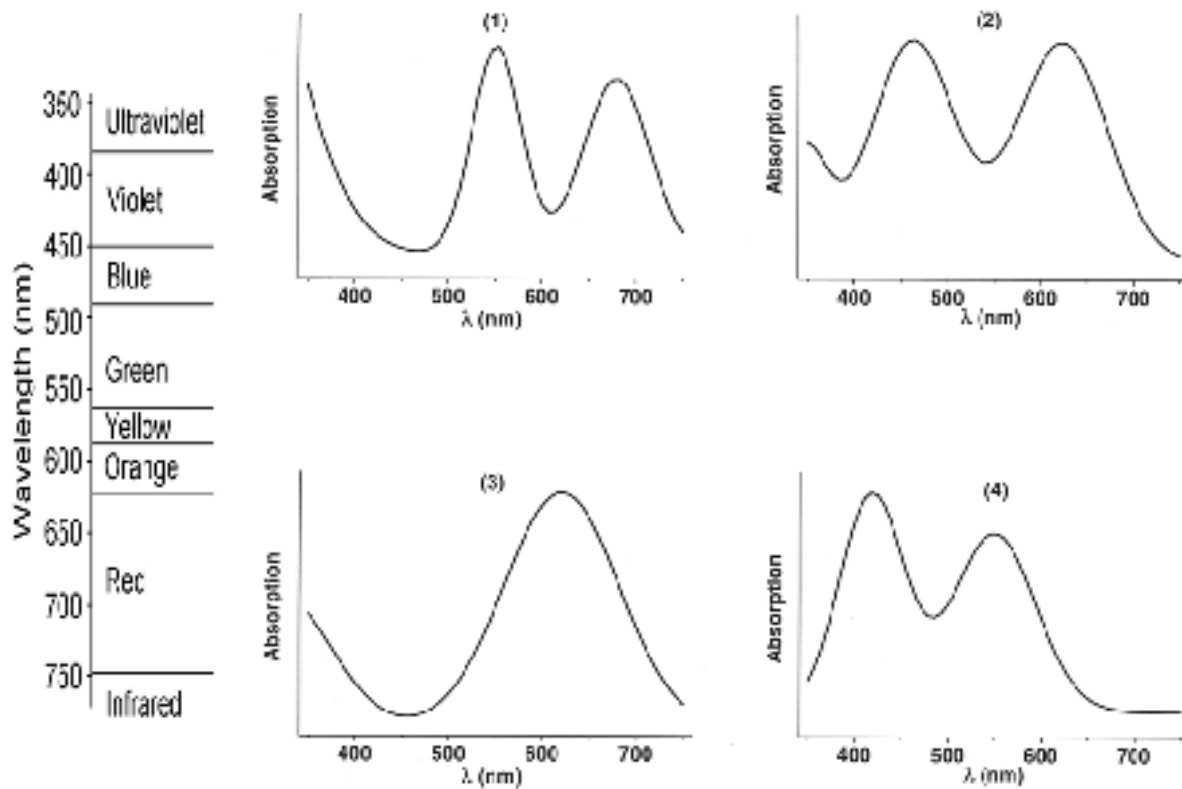


Figure 1

The rod used in ruby lasers is a cylinder with a length of 15.2 cm and a diameter of 1.15 cm. The amount of Cr^{3+} ions is 0.050 mass%. The density of Al_2O_3 is 4.05 g cm^{-3} . The atomic mass of Cr = 52u. ($1\text{u}=1.67 \times 10^{-27} \text{ kg}$).

Name:

Student Code:

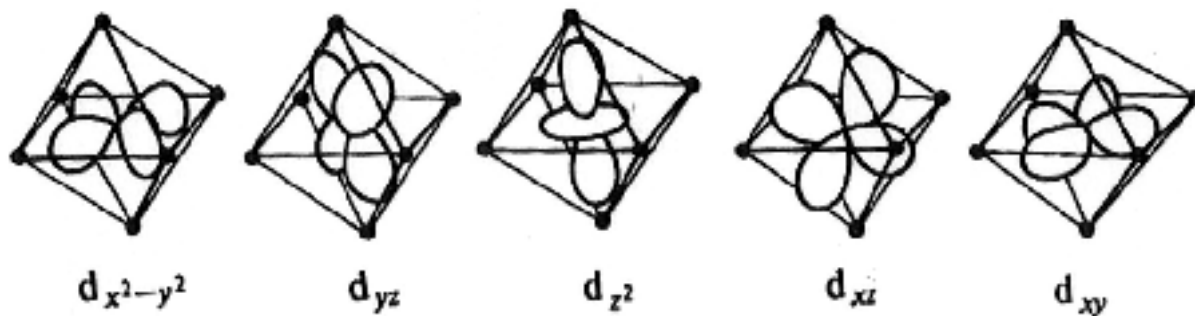
IV-2-2 Calculate how many Cr^{3+} ions are in this laser rod.

Answer:

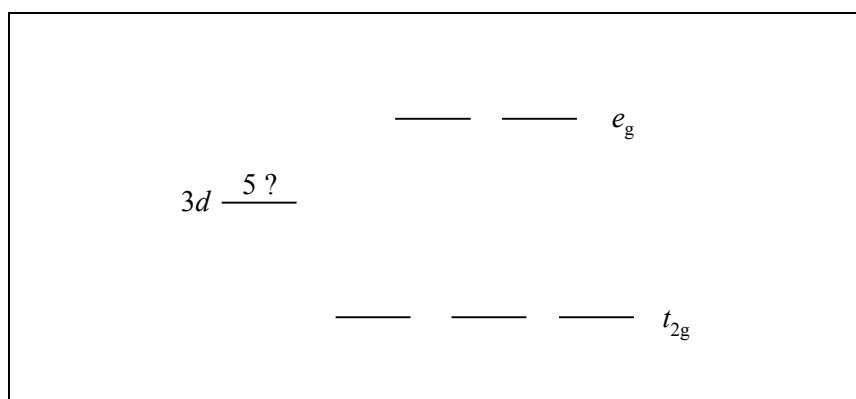
Calculation:

In rubies the Cr^{3+} ions are coordinated by an octahedron of 6 oxygen ions. The shape of the five $3d$ orbitals is shown below. The box below shows the splitting of the five $3d$ orbitals into a group of three orbitals at lower energy (t_{2g}) and a group of two at higher energy (e_g).

IV-2-3 Indicate in the boxes below which of the $3d$ orbitals (d_z^2 , d_{xy} , d_{yz} , $d_{x^2-y^2}$, d_{xz}) belong to the t_{2g} group and which belong to the e_g group.



IV-2-4 Indicate with arrows the distribution and the direction of the magnetic spin moment of the three $3d$ electrons of Cr^{3+} over the five d orbitals in the lowest energy state of Cr^{3+} .



Name:

Student Code:

The ruby is placed on a (non-magnetic) scale. When the scale is in balance (Figure 2) a magnet is placed directly under the side with the ruby.

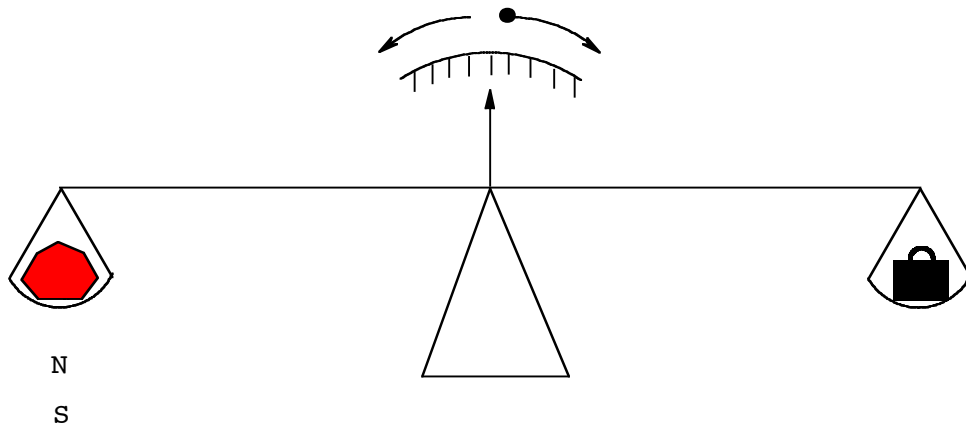


Figure 2

IV-2-5 Indicate what will happen with the ruby (mark the correct answer)

- The magnet attracts the ruby (the ruby moves down)
- The magnet has no influence on the ruby (the ruby does not move)
- The magnet repels the ruby (the ruby moves up)
- The magnet has an oscillating effect on the ruby (the ruby moves up and down)

Name:

Student Code:

Problem IV-3 Vehicle Traction Batteries

Score: 5 points

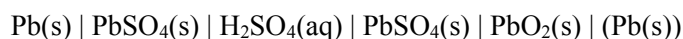
	1	2	3	4
Marks	25	25	20	30

Battery-powered electric vehicles (EV's) are likely to become increasingly common in the next 50 years because of growing concern over pollution caused by vehicles using combustion engines. The reason for the current meagre commercial success of EV's is that the battery specifications must have a performance and cost profile comparable to conventionally powered vehicles.

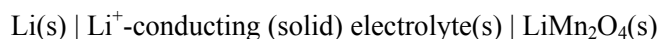
Lead-acid batteries are extensively used as portable power sources for vehicles and traction. A lead-acid battery capable of efficient recharging has an energy density of 45 Wh/kg.

In the current evolution of EV batteries, the most promising long-term solution is the rechargeable light weight lithium-ion battery. Such batteries are under intensive investigation worldwide and hold also promise for the storage of electricity from solar cells. Their weight is 1/3 of a lead-acid battery. Lithium is used as a negative electrode. It has a high specific capacity and electrode potential. A common positive electrode material is the environmentally benign spinel-type LiMn_2O_4 . The spinel structure comprises a matrix of cubic close-packed oxide ions, stabilised by lithium ions in tetrahedral sites and manganese ions in octahedral sites. In LiMn_2O_4 half of the manganese ions has an oxidation state +3 and half the oxidation state +4.

A lead-acid battery is represented by:



A lithium battery is represented by:



Upon discharge the insertion product $\text{Li}_2\text{Mn}_2\text{O}_4$ is formed. Charging the battery leads to the products Li(s) and LiMn_2O_4 .

IV-3-1 Give the electrochemical reactions at the electrodes of the lead-acid battery during discharge.

Reaction at the negative electrode:

Reaction at the positive electrode:

Name:

Student Code:

IV-3-2 Give the electrochemical reactions at the electrodes of the lithium-ion battery upon discharge.

Reaction at the negative electrode:

Reaction at the positive electrode:

IV-3-3 Give the coordination numbers of the lithium ions and of the manganese ions in the spinel structure of LiMn_2O_4 .

Li-ions:

Mn-ions:

A typical family car of 1000 kg requires at least 5 kWh of energy to move 50 km, which corresponds with the consumption of about 5.0 L or 3.78 kg of petrol. This conventional car has a petrol tank volume of 50 L. The weight of the tank is 10 kg. The fuel consumption is 10 km L^{-1} .

IV-3-4 Calculate the extra weight of the car if the petrol tank is replaced by an equivalent battery in an EV based on (a) lead-acid battery and (b) lithium battery. Assume that in all cases the engine efficiency is the same.

(a) Extra weight of a lead-acid battery car:

Answer:

Calculation:

(b) Extra weight of a lithium battery car:

Answer:

Calculation:

Name:

Student Code:



Periodic Table of Elements

Atomic weights based on ¹²C = 12
(Numbers) = most stable isotope

s block	I		II		p block										d block														f block																																																																																																																																																																																																																																																																																																																																																																																																																																																																																																																																																																																																																																																																																																																																																																																																																																																																																																																																																																																																													
	1		2		3	4	5	6	7	8	9	10	11	12	13	14	15	16	17	18	19	20	21	22	23	24	25	26	27	28	29	30	31	32	33	34	35	36	37	38	39	40	41	42	43	44	45	46	47	48	49	50	51	52	53	54	55	56	57	58	59	60	61	62	63	64	65	66	67	68	69	70	71	72	73	74	75	76	77	78	79	80	81	82	83	84	85	86	87	88	89	90	91	92	93	94	95	96	97	98	99	100	101	102	103	104	105	106	107	108	109	110	111	112	113	114	115	116	117	118	119	120	121	122	123	124	125	126	127	128	129	130	131	132	133	134	135	136	137	138	139	140	141	142	143	144	145	146	147	148	149	150	151	152	153	154	155	156	157	158	159	160	161	162	163	164	165	166	167	168	169	170	171	172	173	174	175	176	177	178	179	180	181	182	183	184	185	186	187	188	189	190	191	192	193	194	195	196	197	198	199	200	201	202	203	204	205	206	207	208	209	210	211	212	213	214	215	216	217	218	219	220	221	222	223	224	225	226	227	228	229	230	231	232	233	234	235	236	237	238	239	240	241	242	243	244	245	246	247	248	249	250	251	252	253	254	255	256	257	258	259	260	261	262	263	264	265	266	267	268	269	270	271	272	273	274	275	276	277	278	279	280	281	282	283	284	285	286	287	288	289	290	291	292	293	294	295	296	297	298	299	300	301	302	303	304	305	306	307	308	309	310	311	312	313	314	315	316	317	318	319	320	321	322	323	324	325	326	327	328	329	330	331	332	333	334	335	336	337	338	339	340	341	342	343	344	345	346	347	348	349	350	351	352	353	354	355	356	357	358	359	360	361	362	363	364	365	366	367	368	369	370	371	372	373	374	375	376	377	378	379	380	381	382	383	384	385	386	387	388	389	390	391	392	393	394	395	396	397	398	399	400	401	402	403	404	405	406	407	408	409	410	411	412	413	414	415	416	417	418	419	420	421	422	423	424	425	426	427	428	429	430	431	432	433	434	435	436	437	438	439	440	441	442	443	444	445	446	447	448	449	450	451	452	453	454	455	456	457	458	459	460	461	462	463	464	465	466	467	468	469	470	471	472	473	474	475	476	477	478	479	480	481	482	483	484	485	486	487	488	489	490	491	492	493	494	495	496	497	498	499	500	501	502	503	504	505	506	507	508	509	510	511	512	513	514	515	516	517	518	519	520	521	522	523	524	525	526	527	528	529	530	531	532	533	534	535	536	537	538	539	540	541	542	543	544	545	546	547	548	549	550	551	552	553	554	555	556	557	558	559	560	561	562	563	564	565	566	567	568	569	570	571	572	573	574	575	576	577	578	579	580	581	582	583	584	585	586	587	588	589	590	591	592	593	594	595	596	597	598	599	600	601	602	603	604	605	606	607	608	609	610	611	612	613	614	615	616	617	618	619	620	621	622	623	624	625	626	627	628	629	630	631	632	633	634	635	636	637	638	639	640	641	642	643	644	645	646	647	648	649	650	651	652	653	654	655	656	657	658	659	660	661	662	663	664	665	666	667	668	669	670	671	672	673	674	675	676	677	678	679	680	681	682	683	684	685	686	687	688	689	690	691	692	693	694	695	696	697	698	699	700	701	702	703	704	705	706	707	708	709	710	711	712	713	714	715	716	717	718	719	720	721	722	723	724	725	726	727	728	729	730	731	732	733	734	735	736	737	738	739	740	741	742	743	744	745	746	747	748	749	750	751	752	753	754	755	756	757	758	759	760	761	762	763	764	765	766	767	768	769	770	771	772	773	774	775	776	777	778	779	780	781	782	783	784	785	786	787	788	789	790	791	792	793	794	795	796	797	798	799	800	801	802	803	804	805	806	807	808	809	810	811	812	813	814	815	816	817	818	819	820	821	822	823	824	825	826	827	828	829	830	831	832	833	834	835	836	837	838	839	840	841	842	843	844	845	846	847	848	849	850	851	852	853	854	855	856	857	858	859	860	861	862	863	864	865	866	867	868	869	870	871	872	873	874	875	876	877	878	879	880	881	882	883	884	885	886	887	888	889	890	891	892	893	894	895	896	897	898	899	900	901	902	903	904	905	906	907	908	909	910	911	912	913	914	915	916	917	918	919	920	921	922	923	924	925	926	927	928	929	930	931	932	933	934	935	936	937	938	939	940	941	942	943	944	945	946	947	948	949	950	951	952	953	954	955	956	957	958	959	960	961	962	963	964	965	966	967	968	969	970	971	972	973	974	975	976	977	978	979	980	981	982	983	984	985	986	987	988	989	990	991	992	993	994	995	996	997	998	999	1000

Name:

Student Code:

Scientific Committee of the 34th International Chemistry Olympiad

Chairperson:

Prof.dr. B. Zwanenburg

University of Nijmegen

Section Theory:

Prof.dr.ir. H. van Bekkum

Delft University of Technology

Prof.dr. H.P.J. Bloemers

University of Nijmegen

Prof.dr. F.B. van Duijneveldt

University of Utrecht

Prof.dr. J.B.F.N. Engberts

University of Groningen

Dr. G.A. van der Marel

University of Leiden

Prof.dr. E.W. Meijer

Eindhoven University of Technology

Prof.dr. A. Meijerink

University of Utrecht

Prof.dr. A. Oskam

University of Amsterdam

Prof.dr. J. Schoonman

Delft University of Technology

Prof.dr. A.J. Schouten

University of Groningen

Ms. Prof.dr. N.H. Velthorst

Free University, Amsterdam

Prof.ir. J.A. Wesselingh

University of Groningen

Section Practical:

Prof.dr. J.F.J. Engbersen

Twente University of Technology

Dr. E. Joling

University of Amsterdam

Dr. A.J.H. Klunder

University of Nijmegen

Dr. A.J. Minnaard

University of Groningen

Dr. J.A.J.M. Vekemans

Eindhoven University of Technology

Mr.Ing. T. van Weerd

University of Nijmegen

Dr. W.H. de Wolf

Free University, Amsterdam

Consultants:

Drs. P. de Groot

Drs. A.M Witte

Drs. W. Davids

Secretariat:

Dr. R. Ruinaard

J. Brinkhorst

Ms. M.V. Versteeg

University of Nijmegen